

CE 730

Airlift reactor



Learning objectives/experiments

- influence of the superficial gas velocity on:
 - ▶ gas content
 - ▶ mass transfer coefficient
 - ▶ mixing time
 - ▶ superficial fluid velocity

Description

- aerobic submerged reactor
- external circulation
- investigation of characteristic properties

Airlift reactors are submerged reactors in which the energy input is achieved by applying gas. Compressed air is often used as the gas.

During operation compressed air enters the airlift reactor at the bottom through the gas distributor. The added air mixes with the contents of the reactor and rises in the form of air bubbles. The rising air bubbles cause an upward flow. In doing so a portion of the oxygen in the air dissolves in the water. The area with the upward flow is called the riser. The remaining air bubbles leave the water at the top of the reactor. The gas-free liquid is fed back to the bottom section of the reactor in parallel to the riser.

The area with the downward flow of an airlift reactor is called the downcomer. During operation the content of the reactor is recirculated through the riser and the downcomer. This recirculation is overlaid by perfusion in continuous operation. An additional tank with feed pump is provided for this purpose. The velocity of the circulation is set by the flow rate of the air.

The CE 730 trainer is designed for the study of characteristic properties of an airlift reactor with air, nitrogen and water. Applying air causes the oxygen content in the water to increase. It is possible to reduce the oxygen content in the water by using nitrogen. This is the prerequisite for determining the mass transfer coefficient of oxygen in water.

The liquid superficial velocity is determined by measuring the electrical conductivity. A metering pump and a tank for a salt solution are provided to increase the electrical conductivity. The mixing time is determined by an indicator. The gas content is determined by the level in the airlift reactor.

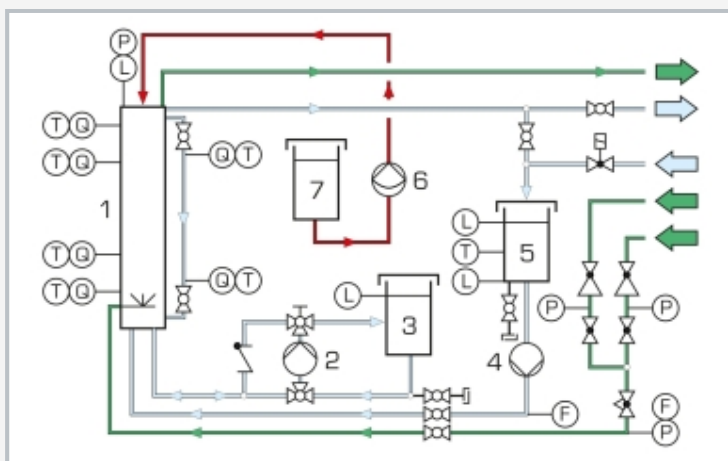
The measured values are displayed digitally on the switch cabinet and can simultaneously be transmitted via USB directly to a PC, where they can be analysed using the software included.

CE 730

Airlift reactor



1 airlift reactor with external circulation, 2 feed pump, 3 feed tank, 4 circulating pump, 5 storage tank, 6 metering pump



1 airlift reactor with external circulation, 2 circulating pump, 3 storage tank, 4 feed pump, 5 feed tank, 6 metering pump, 7 tracer tank; F flow rate, L level, P pressure, Q analysis, T temperature; blue: water, green: gas, red: tracer

Specification

- [1] determination of important characteristic variables at the airlift reactor
- [2] transparent airlift reactor with external recirculation
- [3] compressed air for generation of air bubbles to recirculate the reactor contents
- [4] adjustment of the superficial gas velocity via a valve and mass flow controller
- [5] nitrogen to remove the oxygen from the reactor content
- [6] determination of the superficial liquid velocity via the conductivity
- [7] determination of the mixing time with indicator and colour change method
- [8] sensors for measuring the conductivity, oxygen content, pressure and flow rate
- [9] GUNT software for data acquisition via USB under Windows 10

Technical data

Airlift reactor

- riser: \varnothing 180mm
- downcomer: \varnothing 60mm
- height: 2000mm

Measuring ranges

- conductivity: 4x 0...100mS/cm
- oxygen concentration: 2x 0...10mg/L
- pressure: 0...3bar
- flow rate:
 - ▶ 0,06...3m³/h (water)
 - ▶ 1...10m³/h (gas)

230V, 50Hz, 1 phase
 230V, 60Hz, 1 phase; 120V, 60Hz, 1 phase
 UL/CSA optional
 LxWxH: 1850x790x2450mm
 Weight: approx. 300kg

Required for operation

compressed air (>8m³/h), nitrogen gas cylinder with pressure reducing valve, cold water connection (>400L/h), drain
 PC with Windows recommended

Scope of delivery

- 1 trainer
- 1 GUNT software + USB cable
- 1 set of accessories
- 1 set of instructional material

CE 730

Airlift reactor

Optional accessories

for Remote Learning

GU 100 Web Access Box

with

CE 730W Web Access Software